

EDMO

THINK JACKS - THINK **EDMO**

PRODUCT CATALOGUE







CONTENTS

HOW IT WORKS	3
LIFT 'N' LOCK	4
SINGLE STAGE JACKS	8
TELESCOPIC JACKS	12
JACK STANDS	16
EXTENSIONS & LOAD CAPS	18
EXTRAS	20
MACHINERY JACK MATRIX	22
OUR SERVICE PROMISE	24



AUSTRALIAN MADE WORLD LEADER IN MINING JACKS

Established in 1970 as a direct response to a lack of safe equipment for the maintenance of heavy machinery in the resources industry in Australia. EDMO focuses primarily on jacks, stands and attachments required to lift equipment safely.

EDMO has a zero-incident safety record, and a reputation for uncompromised quality, reliability and robust design. Ensuring lifting operations are always safe, even under the toughest conditions. EDMO is the only Australian manufacturer of jacks and jack stands, built to exceed global safety standards.



**ZERO-INCIDENT
SAFETY RECORD**



**50 YEARS
EXPERIENCE**

HOW IT WORKS

Lifting jacks are an essential tool at any mine site, tyre bay or mechanical workshop. EDMO's intimate knowledge of different types of heavy equipment drives the design of our jacks, stands and wide range of specialised load caps.

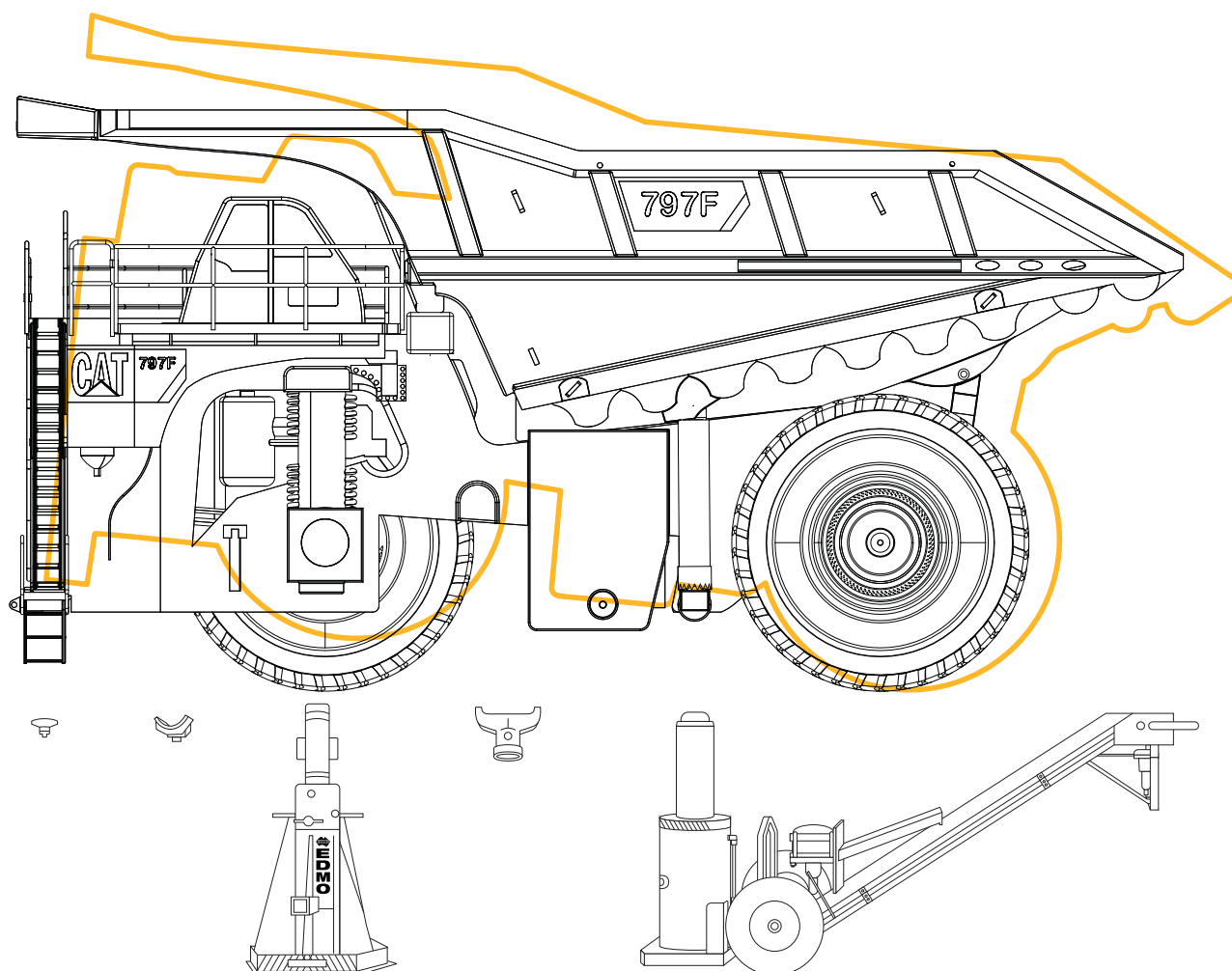
When lifting heavy vehicles, the load dynamics vary so that the positioning of the lifting points move. EDMO's strong lifting cylinders are made in Australia, designed for strength and capable of withstanding much more than their rated W.L.L.s. The strength of the lifting cylinder, coupled with customised, machine-specific load caps, makes for the safest lift every time.

At EDMO, we have developed jacks with the largest diameter rams, widest bases and tightest tolerances in the market. These combined features minimise the stress and possible damage to the jack during the event of slight

side loading. Additionally, our jacks have the lowest of all operating pressures at around 3,000psi, compared to competitors jacks which operate up to 10,000psi. These features and more make EDMO jacks the safest and strongest jacks in the world.

We have customised our load cap range to handle pivoting with a full range of swivel, pivot, flat ribbed, concave and clevis load caps. Each of which can be customised. Customised load caps are specially designed to fit the appropriate lifting locations of each machine type, to be used under site operating procedures.

Each piece of heavy machinery will have its unique lifting points and it is important to follow the machine manufacturers guidelines. All EDMO products are designed and certified to comply with correct lifting practices.





EDMO

LIFT 'N' LOCK

The EDMO Lift 'n' Lock is an air hydraulic jack and locking support stand combined in one unit. It exceeds both the Australian standard for jacks and the Australian standard for vehicle stands.

BLACK & YELLOW
Safety colours invoke the mindset of safe lifting operations. THINK YELLOW, THINK SAFETY.

COLOUR CODED LOAD CAPS
Ensure easy selection of the correct load cap every time.

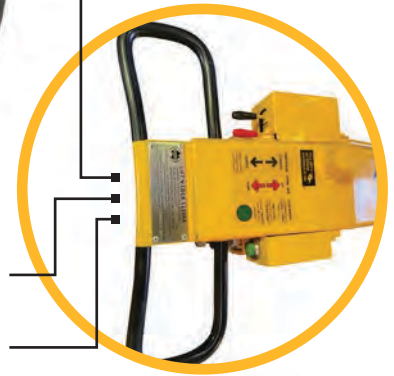
LOCK POSITION INDICATOR POLE
Very clear visual indication of the jack's correct lock positions, enables the operator to select the correct heights at which to engage the locking mechanism.

VISUAL LOCK INDICATOR
Clearly indicates the 'LOCK' and 'UNLOCK' positions with colour coded decals.

LARGE DIAMETER WHEELS
Offer ease of manoeuvrability.

EDMOTIVATOR PACKAGE
Utilises the jacks existing air supply for superior reliability and power, never run out of batteries again.

OIL WATER SEPARATOR
Ensures the oil supply to the pneumatics is always clean, never contaminated.



LOCKABLE ISOLATION VALVE

TYPE A CLAW FITTING
Air inlet fitting, safe and convenient.

REFLECTIVE WLL DECAL
Easy to identify even in low light conditions. WLL displayed in kgs = no confusion.

TWO STRONG LIFTING POINTS
Centrally located to ensure a balanced load when moving the jack with a forklift or sling.

EXTENDED HANDLE LENGTH
Allows the operator to stand outside the machine footprint.

STRONGEST MECHANICAL LOCK
Up to five times the locking surface area of competitor products.

LOW OPERATING PRESSURE
The lowest operating hydraulic pressure of any jack on the market.

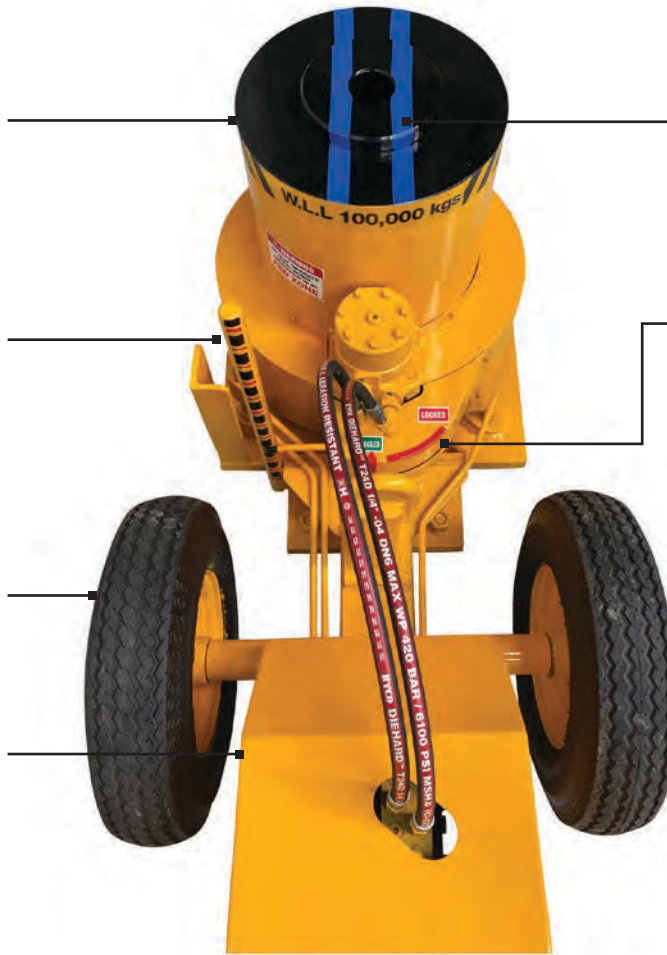
SINGLE WELD SEAM
The jack bottle is welded to the base plate with a single continuous weld seam for superior strength and durability.

PNEUMATIC TYRES
High strength pneumatic tyres with low rolling resistance.

SQUARE BASE
Helps to prevent rolling and movement experienced on challenging surfaces.

LOWERING CONTROL VALVE
Ensuring safe and controlled lowering.

HYDRAULIC FUSE
In the event of catastrophic damage during use, the hydraulic fuse will activate to prevent an uncontrolled movement.



EDMO
LIFT 'N'
LOCK
PRODUCTS

01 LIFT 'N' LOCK JACK & STAND

The operating DCV (hydraulics) pressures of the EDMO Lift 'n' Lock range are between 3,000 and 5,700 PSI for our highest capacity Lift 'n' Lock. This is much lower and therefore safer than competitor jacks, which operate under pressures of up to 10,000 PSI. Lower operating pressures also make for superior reliability, as our equipment is not operating under the constant duress of extreme high pressures. Modifications to the body allow more ground clearance than previous models, for easier travel on rough terrain.



Model No.	Working Load Limit		Closed Height with Load Cap	Maximum Raised Height with Load Cap	Approx. Weight
	kg	US Ton (approx.)			
LL5A	50,000	55	650	1104	460
LL10A	100,000	110	726	1160	600
LL10AL	100,000	110	561	866	520
LL12A	125,000	138	727	1160	600
LL12AL	125,000	138	561	866	520
LL15RA	150,000	165	925	1495	1180
LL15AL	150,000	165	564	775	1010
LL20RA	200,000	220	925	1495	1180
LL20AL	200,000	220	564	775	1010

02 CUSTOM JACK HEIGHTS

Jack heights and handle configurations can be customised for use on low clearance machinery, such as underground mining equipment.

03 EDMOTIVATOR

The Edmotivator system powers a drive wheel using the jacks main pump and air supply. This gives the significant advantage of power and reliability over battery powered propulsion systems.

The Edmotivator is operated from the handle of the jack. With the flick of a lever, the jack can be moved forward or back as required by the operator. The operator always retains full control of the motion. The speed is controlled by increasing or decreasing the air supply via the attached ball valve. A jack with an Edmotivator fitted can also be manoeuvred manually.

SAFETY, INNOVATION & RELIABILITY

Three reasons why EDMO Lift 'n' Lock stands out from the rest.

The requirement to improve safety and reduce risk is front of mind for any heavy machinery operator. EDMO Lift 'n' Lock was introduced almost two decades ago, and has been leading the pack ever since with its ability to bring innovation and safety to the site. The Lift 'n' Lock is the simplest locking jack on the market, built with the strength of EDMO's Australian made hydraulic cylinder, making it the popular choice.



01

LOCKING MECHANISM

The locking rings remain open during normal operation of the jack. Once the lift is complete the green 'Lock' button is pressed and the locking rings will slowly and smoothly engage on the down stroke ensuring a fully engaged mechanical lock. Once the jack is operated in the up stroke the locking rings automatically disengage.



02

EASY & SIMPLE CONTROLS

All controls are well clear of the lift point, on the handle. The simple controls make it easy and reliable to use.



03

EXTERNAL MECHANISMS

All mechanisms are external and easy to see and use. Having an uncomplicated locking jack has made the Lift 'n' Lock the most popular choice in the workshop.



EDMO

SINGLE

STAGE

JACKS

The EDMO Single Stage Jacks are powered by an air pump. Like all EDMO Jacks, they far exceed the minimum safety requirement of the AS/NZ2693. Operating controls are on the handle, well away from the jack body. The jacks are power up and power down.

EDMOTIVATOR PACKAGE
Utilises the jacks existing air supply for superior reliability and power, never run out of batteries again.

BLACK & YELLOW
Safety colours invoke the mindset of safe lifting operations. THINK YELLOW, THINK SAFETY.

SINGLE WELD SEAM
The jack bottle is welded to the base plate with a single continuous weld seam for superior strength and durability.

COLOUR CODED LOAD CAPS & EXTENSIONS
Ensure easy selection of the correct load cap and extension every time.

LARGE DIAMETER WHEELS
Offers ease of maneuverability.

MANUAL VALVES
Manual selection valves have clear 'UP', 'DOWN' and 'NEUTRAL' positions for simple operation.

OIL WATER SEPARATOR
Ensures the oil supply to the pneumatics is always clean, never contaminated.

TYPE A CLAW FITTING
Air inlet fitting, safe and convenient.

LOCKABLE ISOLATION VALVE

STRONG LIFTING POINT
Centrally located to ensure a balanced load when moving the jack with a forklift or sling.

REFLECTIVE WLL DECAL
Easy to identify even in low light conditions. WLL displayed in kgs = no confusion.

HYDRAULIC FUSE
In the event of catastrophic damage to the jack during use, the hydraulic fuse will activate to prevent an uncontrolled movement.

SQUARE BASE
Helps to prevent rolling and movement experienced on challenging surfaces.

ACCESSORY CARRIER
For convenient storage and transportation of load caps and extensions.

EXTENDED HANDLE LENGTH
Allows the operator to stand outside the machine footprint.

LOWERING CONTROL VALVE
Constantly operating throughout the lowering process ensuring safe and controlled lowering.

EDMO
SINGLE STAGE
JACKS
PRODUCTS

01 SINGLE STAGE JACK

EDMO Single Stage Jacks work using switches to air-activated hydraulic valves. This feature reduces the risk of operator error, and therefore risk of damage to the jack and locking systems.

The operating DCV (hydraulics) pressures of the EDMO range are between 3,000 and 5,700 PSI for our highest capacity Jack. This is much lower and therefore safer than competitor jacks, which operate under pressures of up to 10,000 PSI. Lower operating pressures also make for superior reliability, as our equipment is not operating under the constant duress of extreme high pressures. This provides protection against an uncontrolled movement. EDMO Jacks give complete control over the lowering process.



Model No.	Working Load Limit		Closed Height with Load Cap	Maximum Raised Height with Load Cap	Approx. Weight
	kg	US Ton (approx.)			
DM5	50,000	55	422	644	185
DM7	75,000	83	422	644	195
DM10	100,000	110	637	1018	387
DM15	150,000	165	647	1015	485
DMA200	200,000	220	651	1018	635

02 AIR LINE REMOTE CONTROL

The remote control has the safety advantage of the operator being well clear of the load being jacked. The controls for the raising and lowering of the jack are connected by a three core flexible air line that allows the operator to move up to five meters away from the jack and control the up and down functions.

03 EDMOTIVATOR

The Edmotivator system powers a drive wheel using the jacks main pump and air supply. This gives the significant advantage of power and reliability over battery powered propulsion systems.

The Edmotivator is operated from the handle of the jack. With the flick of a lever, the jack can be moved forward or back as required by the operator. The operator always retains full control of the motion. The speed is controlled by increasing or decreasing the air supply via the attached ball valve. A jack with an Edmotivator fitted can also be manoeuvred manually.

YOUR PARTNERS IN SAFETY

The mission of EDMO Australia is to engineer lasting innovation for safety and simplicity when lifting heavy equipment. Safety is at the forefront of all that we do, it is our reason for being.

For over fifty years, EDMO has been working with our customers to ensure lifting operations are always safe, even under the toughest conditions. We are continually building on the safety features of our products. As an example, all new jacks and stands will now feature reflective working load limit decals. Working load limits are now clearly displayed on all lifting and standing equipment in kilograms to ensure there can be no confusion when selecting the right tools for the job.

Our jacks run at half or less hydraulic operating pressures when compared to competitor products. This has two significant benefits; lower pressures are safer pressures, lower pressures place less stress on the jacks, making for more reliable equipment.

We also welcome opportunities to find bespoke product solutions to make safe our customers most challenging lifting operations. Customised jacks, stands and engagement load caps and extensions are just the beginning of our capability to work with you to ensure secure and safe lifting operations.

There is nothing accidental about EDMO's choice of colours, which have endured for fifty years. The contrasting yellow and black shouts safety in every language. The colours are instantly recognisable as the EDMO brand.

Think Yellow, Think Safety.



**ZERO-INCIDENT
SAFETY RECORD**



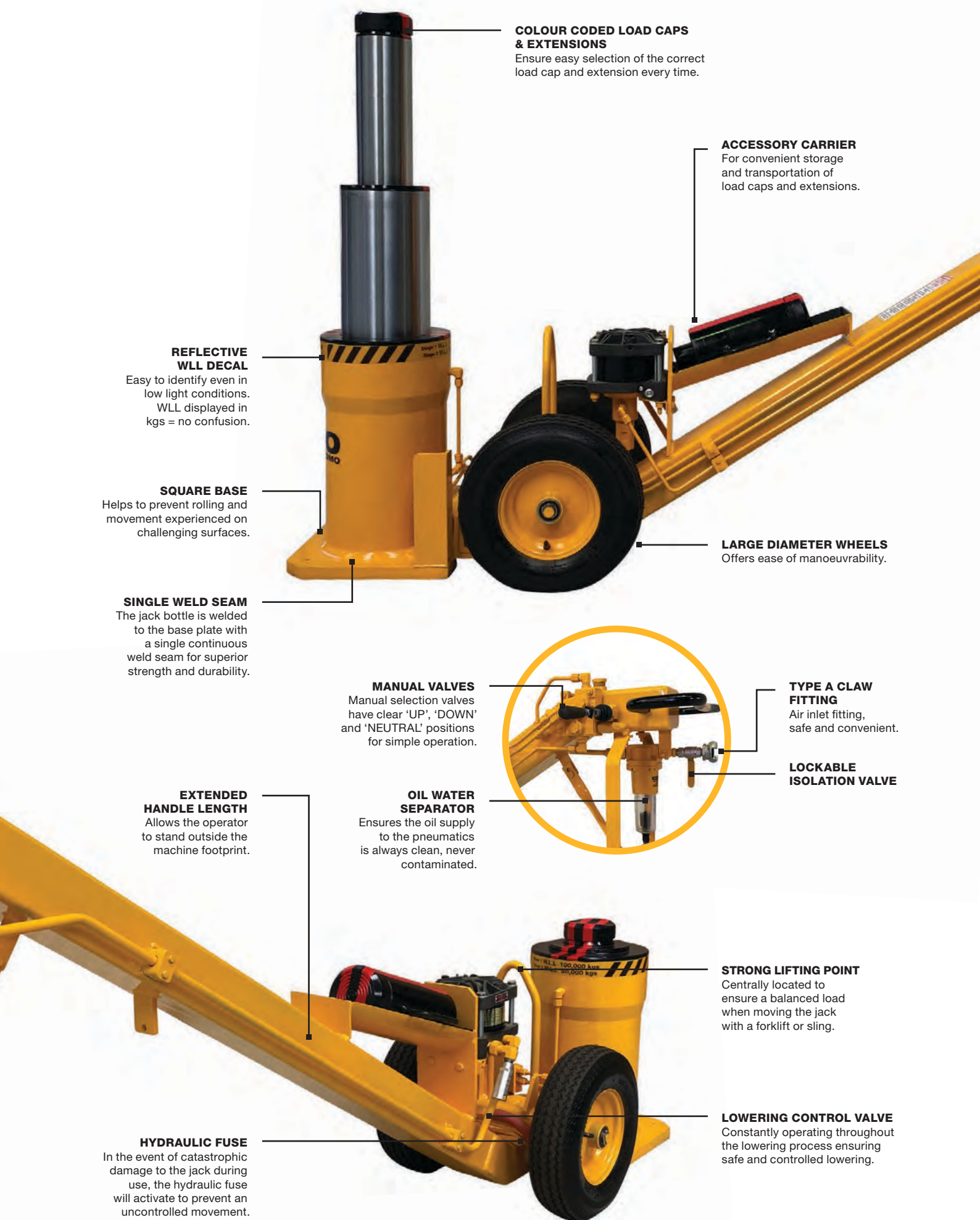


EDMO

TELESCOPIC

JACKS

EDMO Telescopic Jacks are two stage jacks, with a different working load limit at each stage. They are powered by an air pump and like all EDMO jacks, they far exceed the minimum safety requirement of the ASNZ2693. Operating controls are on the handle, well away from the jack body. The jacks are power up and power down.



COLOUR CODED LOAD CAPS & EXTENSIONS
Ensure easy selection of the correct load cap and extension every time.

ACCESSORY CARRIER
For convenient storage and transportation of load caps and extensions.

REFLECTIVE WLL DECAL
Easy to identify even in low light conditions. WLL displayed in kgs = no confusion.

SQUARE BASE
Helps to prevent rolling and movement experienced on challenging surfaces.

SINGLE WELD SEAM
The jack bottle is welded to the base plate with a single continuous weld seam for superior strength and durability.

LARGE DIAMETER WHEELS
Offers ease of manoeuvrability.

MANUAL VALVES
Manual selection valves have clear 'UP', 'DOWN' and 'NEUTRAL' positions for simple operation.

TYPE A CLAW FITTING
Air inlet fitting, safe and convenient.

LOCKABLE ISOLATION VALVE

OIL WATER SEPARATOR
Ensures the oil supply to the pneumatics is always clean, never contaminated.

EXTENDED HANDLE LENGTH
Allows the operator to stand outside the machine footprint.

STRONG LIFTING POINT
Centrally located to ensure a balanced load when moving the jack with a forklift or sling.

HYDRAULIC FUSE
In the event of catastrophic damage to the jack during use, the hydraulic fuse will activate to prevent an uncontrolled movement.

LOWERING CONTROL VALVE
Constantly operating throughout the lowering process ensuring safe and controlled lowering.

EDMO
TELESCOPIC
JACKS
PRODUCTS

01 TELESCOPIC JACKS

EDMO two stage hydraulic jacks are powered by an air pump. The jack is power up and power down.

When jacking, protection is provided against overloading by pressure relief valves. Protection is also provided in the unlikely event of hydraulic line or fitting failure in the form of hydraulic fuses, which are activated by excessive flow.



Model No.	Working Load Limit		Closed Height with Load Cap mm	Maximum Raised Height with Load Cap mm	Approx. Weight kg
	kg Stage 1 / 2	US Ton (approx.) Stage 1 / 2			
LPDT 55/25	55,000 / 25,000	61 / 28	250	378 / 490	140
MPDT 100/50	100,000 / 50,000	110 / 55	620	955 / 1300	500
UPDT 100/50	100,000 / 50,000	110 / 55	300	450 / 595	300
TPDT 150/75	150,000 / 75,000	165 / 83	617	955 / 1295	550
PDT 200/100	200,000 / 100,000	220 / 110	746	1181 / 1635	800

02 AIR LINE REMOTE CONTROL

The remote control has the safety advantage of the operator being well clear of the load being jacked. The controls for the raising and lowering of the jack are connected by a three core flexible air line that allows the operator to move up to five meters away from the jack and control the up and down functions.

03 EDMOTIVATOR

The Edmotivator system powers a drive wheel using the jacks main pump and air supply. This gives the significant advantage of power and reliability over battery powered propulsion systems.

The Edmotivator is operated from the handle of the jack. With the flick of a lever, the jack can be moved forward or back as required by the operator. The operator always retains full control of the motion. The speed is controlled by increasing or decreasing the air supply via the attached ball valve. A jack with an Edmotivator fitted can also be manoeuvred manually.



EDMO'S UNDERGROUND RANGE

Built for underground and harsh conditions.

EDMO developed the LPDT low line jack in response to the difficulty in safely jacking underground equipment.

In the proceeding years, and with the development of larger underground trucks, EDMO developed the UPDT. It is not unusual to see EDMO's UPDT working underground (and mostly underwater!) in the harshest conditions imaginable.

Rounding out EDMO's range of underground jacks is the low-profile LL5A locking jack. This jack was developed in response to our customers' desire to have the inherent safety of EDMO's range of Lift 'n' Lock jacks in an underground application.

Customised Lift 'n' Lock jacks are also a great addition to any underground mine inventory. Saving time between lifting and standing the heavy vehicle.



EDMO JACK STANDS

EDMO's high quality jack stands are designed to work seamlessly with our range of mining jacks. These jack stands are compatible with all common types of mining trucks.



ADJUSTABLE JACK STANDS JS RANGE

The EDMO Adjustable Jack Stands are designed for supporting vehicles during maintenance and repairs. Height adjustments are in increments of 28mm or 51mm, made by a hand pump which raises the inner cylinder. The stands are then mechanically locked off using a high tensile steel locking pin.

Model No.	Working Load Limit	Height Adjustment Increments	Closed Height with Load Cap	Raised Height with Load Cap
	kgs	mm	mm	mm
JS2	25,000	28	625	985
JS5	50,000	28	625	1020
JS10	100,000	51	840	1350
JS15	150,000	51	1015	1626
JS20	200,000	51	1015	1626



DS110-485

Working Load Limit: 110,000kgs
Designed for: D10 & D11 Dozers

Specially designed for the D10 & D11 dozers, the EDMO DS110-485 is a rigid stand. Used in pairs to carry out maintenance work. This stand is used to hold the dozer blade up while changing cutting edge plates. It also can be used with a swivel load cap and placed under the push arms of the dozer. It is suitable for use when standing straight under the blade of the dozer when changing teeth.



DS110-635

Working Load Limit: 110,000kgs
Designed for: D10 & D11 Dozers

Specially designed for the D10 & D11 dozers, the EDMO DS110-635 is a rigid stand with a smaller base area to allow for better positioning under the pivot pin and clearance for the removal of the tracks. Used in pairs with the specialized optional cradle load caps.



AS15

Working Load Limit: 15,000kgs

The AS15 Adjustable Support Stands are designed for supporting vehicles during maintenance and repairs. Height adjustments are made by screwing the inner manually.



WA1200

Working Load Limit: 150,000kgs
Designed for: Komatsu WA1200 Loader

Specially designed for the Komatsu WA1200 Loader, the EDMO WA1200 is a three piece adjustable stand with a stable base area with plenty of clearance for service works to be carried out around the loader.



RS1 & RS5

Working Load Limit: 10,000kgs

The EDMO RS1 & RS5 Rigid Support Stands are designed for supporting vehicles during maintenance and repairs.

SAFETY WARNING: JACK STANDS ARE NOT A JACK INTENDED TO LIFT ANY LOAD.

EDMO

EXTENSIONS & LOAD CAPS





EXTENSIONS & LOAD CAPS

All extensions and load caps are colour coded with their correlating jack models, to ensure a fit for purpose accessory of the appropriate capacity is selected every time. Load caps and extensions can be customised with an unlimited number of configurations and engagements to suit your specific machinery, working conditions and site operating procedures.

Extensions and standard range load caps comply with the Australian standard for jacks and stands. Customised solutions are to be used in accordance with site operating procedures.



SWIVEL & PIVOT LOAD CAPS

The 360 degree rotation, 10 degree slope swivel load caps with a ribbed flat engagement for loads that will pivot as they are being raised. The swivel of the load cap follows the movement of the load and helps to prevent side loading.

Please email our office to engage our experienced team to customise a solution for making safe your most challenging lifting scenarios.

sales@edmo.com.au

SAFETY WARNING: LOAD CAPS ARE TO BE USED UNDER AN ADVISORY STANDARDS CODE OF PRACTICE, IN CONJUNCTION WITH SITE SAFE OPERATING PROCEDURES/RISK ASSESSMENT.

EDMO EXTRAS

Together with our range of jacks and stands, EDMO extras will cover all of your lifting and standing requirements in a safe and user friendly way.



JACK STAND CARRIER STC

For movement of stands around the workplace and positioning them under vehicles. The stand carrier provides greatest manoeuvrability. The stand carrier has a hand pumped jack which raises or lowers the carriers spigot to align with the socket on the stand. When engaged the jack is pumped to lift the stand off the ground. The carrier can then be manoeuvred to carry the stand to where it is required. To lower the stand the jack is released and the stand carrier can be removed. The stand carrier has swivel wheels for manoeuvrability which can be braked to prevent rolling away.



JACK STAND TRANSPORTER JST & JSTF

The transporter has a spigot which fits into the socket of the stand. The stand will be picked up enabling movement and positioning. Transporter's suit all EDMO jack stand models.



FORKLIFT ATTACHMENT

For those situations when it is easier to transport the stand via vehicle, possibly due to rough terrain or distance to travel around the workshop or site. The fork attachment is fitted to the forklift tines and secured by a chain around the backrest. The stand socket will then take the spigot on the fork attachment.



ADJUSTABLE RIM STAND 25-63

The EDMO Adjustable Rim Stand is fabricated with the quality and high standard of workmanship associated with the EDMO brand. It is designed for supporting earthmover wheel rims during maintenance and repairs. Adjustments to suit the rim size are made by sliding the stops and bolting them into position. A centred lifting lug provides a lift point for easy transport around the workplace.



TYRE STANDS

TS 35-63

The EDMO TS35-63 Tyre Stand features access steps, work platform and handrails fabricated with the same quality materials and high standard of workmanship associated with the EDMO brand. The functional design also includes back retainer rails to prevent the wheel lock ring/BSBE from dropping out. The EDMO TS35-63 has a working load limit of 10,000kgs. It is designed for standing wheels for the purpose of dewatering, and to allow easy access for greasing beads and putting coolant in tyres. Suitable for tyres 59/80 R63 down to 35" wheel rim.

TS 20-35

The EDMO TS20-35 Tyre Stand is fabricated with the same quality materials and high standard of workmanship associated with the EDMO brand. It has a working load limit of 2,000kgs.

The EDMO TS20-35 is suitable for wheels with rim sizes 20" through to 35". Designed for standing wheels for the purpose of dewatering, and to allow easy access for greasing beads and putting coolant in tyres.

MACHINERY JACK MATRIX

	LL20RA	LL15RA	LL12A	LL10A	LL5A	DMA200	DM15	DM10	DM7	DM5	PDT	TPDT	UPDT	
TRUCKS	CAT													
	798AC	✓	✓				✓							
	797F	✓	✓				✓							
	796AC	✓	✓					✓						
	795F			✓	✓			✓	✓		✓	✓		
	794AC			✓	✓				✓		✓	✓		
	793F			✓	✓				✓		✓	✓		
	789D			✓	✓				✓		✓	✓		
	785D			✓	✓				✓		✓	✓		
	777G					✓				✓	✓			
	775G					✓				✓	✓			
	773D					✓				✓	✓			
	AD60													✓
	KOMATSU													
	980E -4	✓	✓				✓					✓		
	960E -2	✓	✓				✓					✓		
	930E -5		✓				✓	✓				✓	✓	
830E -5			✓	✓				✓				✓		
730E -8									✓					
HD785					✓					✓				
HITACHI														
EH5000AC-3	✓	✓				✓	✓				✓			
EH4500-2			✓	✓			✓				✓			
EH4000AC-3			✓	✓			✓				✓			
EH3500AC-3			✓	✓										
LIEBHERR														
T284	✓	✓					✓							
T282	✓	✓					✓							
T276			✓	✓				✓						
T264			✓	✓				✓						
TEREX														
MT4400			✓	✓			✓	✓			✓			
MT3700			✓	✓			✓	✓			✓			
LOADERS	CAT													
	994			✓	✓				✓					
	993			✓	✓				✓					
	992			✓	✓	✓	✓	✓	✓	✓				
	R2900													✓
	KOMATSU													
	WA1200			✓	✓				✓					
WA900			✓	✓				✓						
DOZERS	CAT													
	D11					✓			✓	✓				
	D10					✓			✓	✓				
	854					✓			✓	✓				
	KOMATSU													
D475A					✓				✓	✓				
LIEBHERR														
7777					✓				✓	✓				
GRADERS	CAT													
	24H					✓			✓	✓				
	18H					✓			✓	✓				

MPDT	LPDT	JS20	JS15	JS10	JS5	JS2	LOAD CAPS				
		✓	✓				Ø290 swivel	AC rear	AC front	798 pivot	
		✓	✓				Ø290 swivel	797 pivot	797 torque tube		
				✓			Ø290 swivel	AC rear	AC front	796 pivot	
				✓			Ø160 swivel	795 pivot	795 torque tube	795 rear swivel	tow hook
				✓			Ø160 swivel	AC rear	AC front	794 pivot	
				✓			Ø160 swivel	793 pivot	793 torque tube	793 rear strut	tow hook
					✓		Ø160 swivel	789 pivot	789 torque tube	789 tow hook	
					✓						
✓					✓		Ø160 swivel	773-7 pivot	777 torque tube	773-7 tow hook	
✓					✓	✓	Ø160 swivel	773-7 pivot	775 torque tube	773-7 tow hook	
✓					✓	✓	Ø160 swivel	773-7 pivot	793 torque tube	773-7 tow hook	
	✓					✓	Ø160 swivel				
		✓	✓				Ø290 swivel	front dish	front strut	tow hook	
		✓	✓				Ø290 swivel	front strut	tow hook		
				✓			Ø290 swivel	front dish	rear strut	tow hook	
✓					✓		Ø160 swivel	front dish	rear strut	tow hook	
✓					✓		Ø160 swivel	front dish	dished swivel	tow hook	
✓						✓	Ø160 swivel				
			✓	✓			Ø290 swivel	EH5000 torque tube			
					✓		Ø290 swivel	EH4500 front swivel			
					✓		Ø160 swivel				
					✓	✓	Ø160 swivel				
		✓	✓				Ø160 swivel	T284 rear	T284 front		
		✓	✓				Ø160 swivel	chassis swivel	T282 front		
							Ø160 swivel	T276 rear	T276 front		
							Ø160 swivel	T264 rear	T264 front		
				✓			Ø160 swivel				
					✓		Ø160 swivel				
				✓			Ø160 swivel	CAT boom stand			
					✓		Ø160 swivel	CAT boom stand			
✓					✓		Ø160 swivel	CAT boom stand			
	✓					✓	Ø160 swivel	2900 boom stand			
				✓			Ø160 swivel	WA1200 stand			
				✓			Ø160 swivel	WA1200 boom stand			
✓					✓	✓	D11 rear strut	adjustable			
✓					✓	✓	D10 rear strut	adjustable			
✓					✓	✓	Ø160 swivel	854 swivel			
✓					✓	✓	Ø160 swivel				
✓					✓	✓	Ø160 swivel				
✓					✓	✓	Ø160 swivel				
✓					✓	✓	Ø160 swivel				



OUR SERVICE PROMISE

EDMO has always backed its products by offering comprehensive servicing. In the new decade, EDMO has focused significant resources on this aspect of our business, considerably improving turnaround times and parts supply to service agents around Australia and the Globe.

We are now offering an expedited turn around for all jacks and jack stands that enter our workshop for servicing. With our very own oversize wash bay, sand blast room, spray booth, machine centre, welding bay, spare parts warehouse, hydraulic fitting shop and a 500 tonne test bed for final compliance. We have all the parts on-shelf and the tools required to build our product from the ground up, without the need to send anything offsite. This ensures fast turn around and tight quality controls.

Getting your EDMO jacks and stands serviced by EDMO ensures minimal down time of your equipment and quality assurance you can rely on. Alternatively having your EDMO product serviced by a servicing agent has never been more efficient, due to our renewed focus on timely dispatch of spare parts.

Think After Sales Service, Think EDMO.

To arrange servicing or spare parts for your EDMO equipment, please contact +61 7 5591 2400 or visit www.edmo.com.au/service-request/

EDMO has the world's most extensive range of mining jacks and stands. Our products are used and trusted by mining operations in 22 countries.



-
- | | | |
|--------------------|---------------|--------------------------|
| Australia | Ghana | Papua New Guinea |
| Botswana | Indonesia | Peru |
| Brazil | Japan | Russia |
| Canada | Mexico | South Africa |
| Chile | Mongolia | United Kingdom |
| China | Namibia | United States of America |
| Columbia | New Caledonia | |
| Dominican Republic | New Zealand | |



**THE ONLY
AUSTRALIAN MADE
MANUFACTURER
OF JACKS & JACK
STANDS.**

EDMO
THINK JACKS - THINK **EDMO**

Australian made, exporting worldwide. EDMO Australia Pty Ltd
+61 7 5591 2400 sales@edmo.com.au
Australian Headquarters: 6 Olney Court, Southport Qld 4215

BUILT TOUGH TO EXCEED THE TOUGHEST CONDITIONS IN THE WORLD